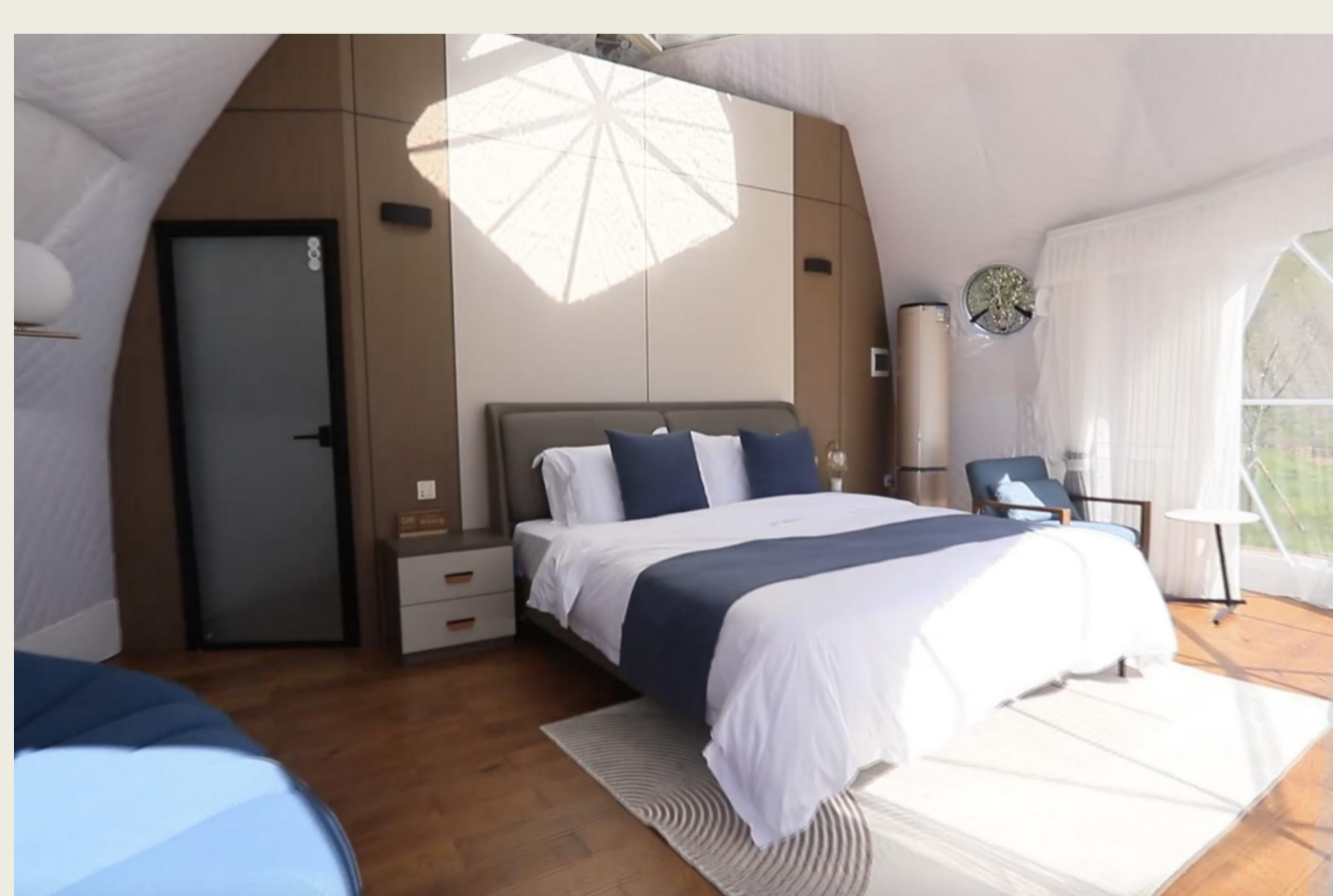
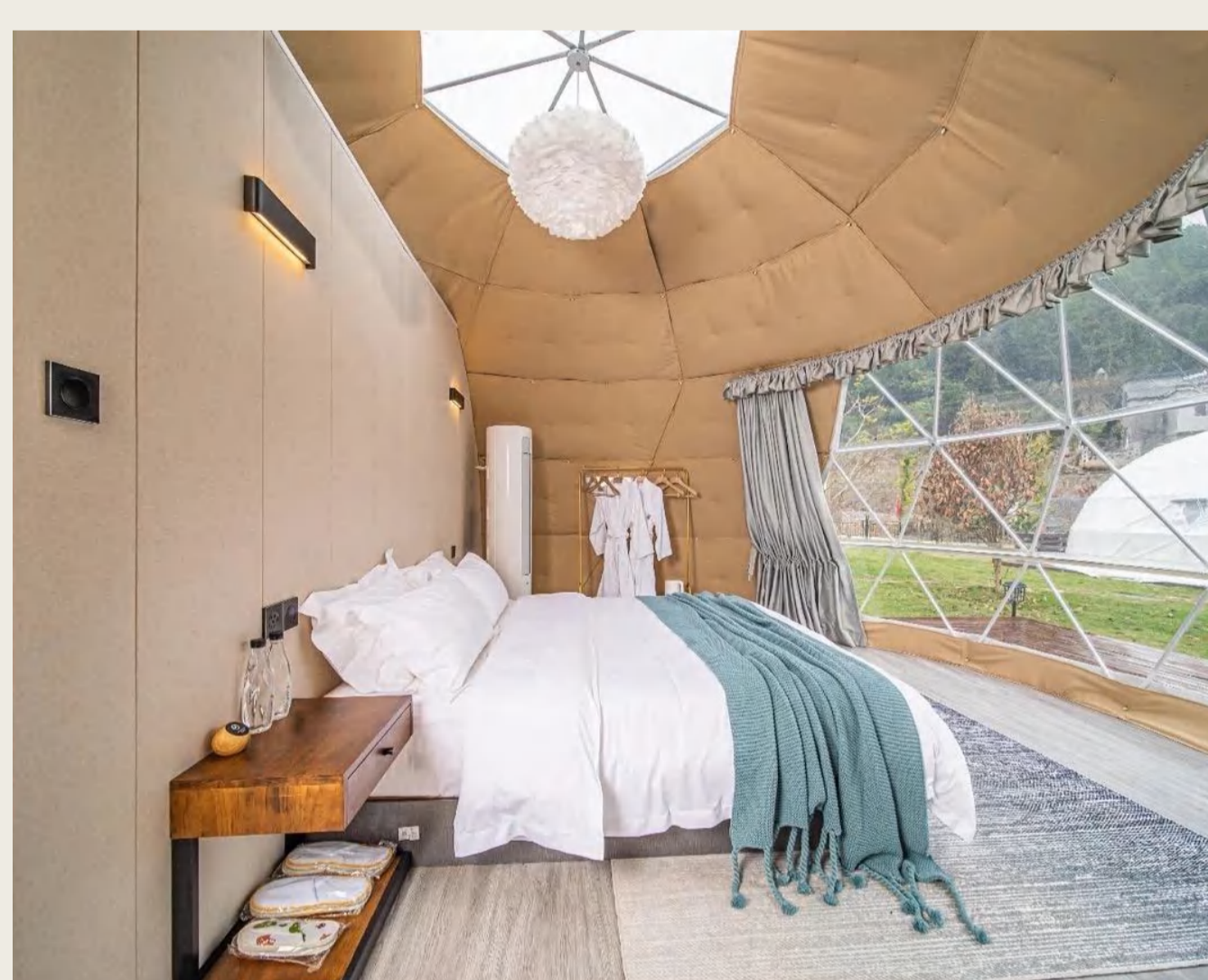


Specifications (M)	Ceiling Height (M)	Interior Area (m <sup>2</sup> )	Bracket Parameters (mm)
Φ4	2.4	12.56	Φ25*1.2
Φ5	3.0	19.62	Φ32*1.2
Φ6	3.6	28.26	
Φ7	4.2	38.46	Φ32*1.5
Φ8	4.3	50.24	
Φ9	4.6	63.58	Φ38*1.5
Φ10	5.1	78.50	
Φ12	6.1	113.00	Φ38*2.0
Φ15	7.8	176.60	Φ42*2.0
Φ16	8.2	200.96	
Φ18	9.2	254.34	
Φ20	10.2	314.00	
Φ22	11.2	379.94	
Φ25	12.7	490.62	Φ48*2.0
Φ30	15.2	706.50	Φ60*2.0
<b>Tent Parameters</b>	PVC Blackout Fabric (750g), White, Flame Retardant: B1 Transparent Area: 1mm PVC Transparent Crystal Board		
<b>Frame Parameters</b>	Main Pipe: Φ25-60mm galvanized steel pipe, wall thickness Φ1.5-2.5mm		
<b>Insulation Cotton</b>	1. Lined Aluminum Foil Cotton: Polyester fiber cotton with aluminum foil foam material + composite Oxford fabric + ultrasonic heat sealing process 2. Standard Cotton: 510g/m <sup>2</sup> / 350g/m <sup>2</sup> diamond-pattern ultrasonic cotton		



## INTERIOR PART



## OPTIONAL SYSTEM ACCESSORIES

### DOOR&WINDOW



01 ▾

### PARTITION SYSTEM

04 ▾



Hard Partition Wall

### VENTILATION SYSTEM

02 ▾

### FLOOR SYSTEM

05 ▾



Moisture-proof Flooring

### INSULATION SYSTEM

03 ▾

### BATHROOM SYSTEM

06 ▾



Integrated Bathroom