

Parameters	Configuration
Overall Dimension(m)/ Area(m <sup>2</sup> )	5.0*9.0*3.0*5.1m / 45m <sup>2</sup>
Interior Area(m)/ projected area(m <sup>2</sup> )	4.85*6.2*2.3m / 30.07m <sup>2</sup> (First floor) 4.85*6.2*0.6*2.8m / 30.07m <sup>2</sup> (Second floor)
Colours	Khaki
Tent Parameters	PVDF architectural membrane fabric(900g) Waterproof pressure(3000KPA) UV protection(UV800+) Fire-retardant (GB8624) Class B1 Mold-resistant, self-cleaning, PVC lifespan of 15 years+
Frame Parameters	Main Pipe: (Φ75mm)Galvanized Steel Pipe、(2.0mm)Thickness (Φ80mm)Galvanized Steel Pipe、(5.0mm)Thickness Argon Arc Welded, Hot-Dip Galvanized Corrosion-Resistant Galvanized Steel Plate Outdoor-Specific Baking Paint Treatment (Resistant To Sunlight And Rain)
Inner Tent Parameters	TC environmental cotton(430g) Waterproof pressure(3000KPa) UV protection(UV800+) Tear resistance: 2112N in the radial direction/1056N in the weft direction Mold-proof, mosquito-proof, breathable
Accessory Parameters	Galvanized bolts、Tear-resistant mesh、Nickel-plated copper snap fasteners 8mm self-tightening anti-aging climbing rope Second layer substrate: Oriented strand board (OSB) Stairs: Intermediate main beam 100*100*2.5mm, tray 300*160*3.5mm, tread 38mm thickness made of Thai rubber wood



## LAYOUT

### FLOOR PLAN

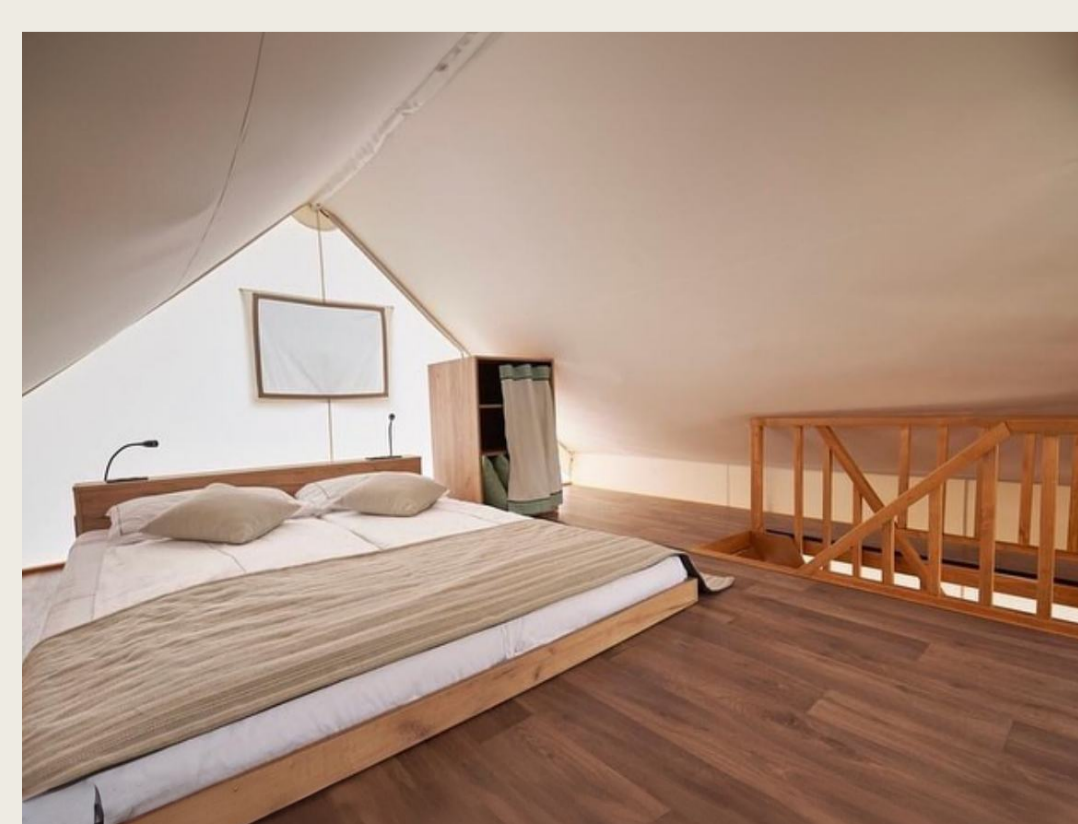
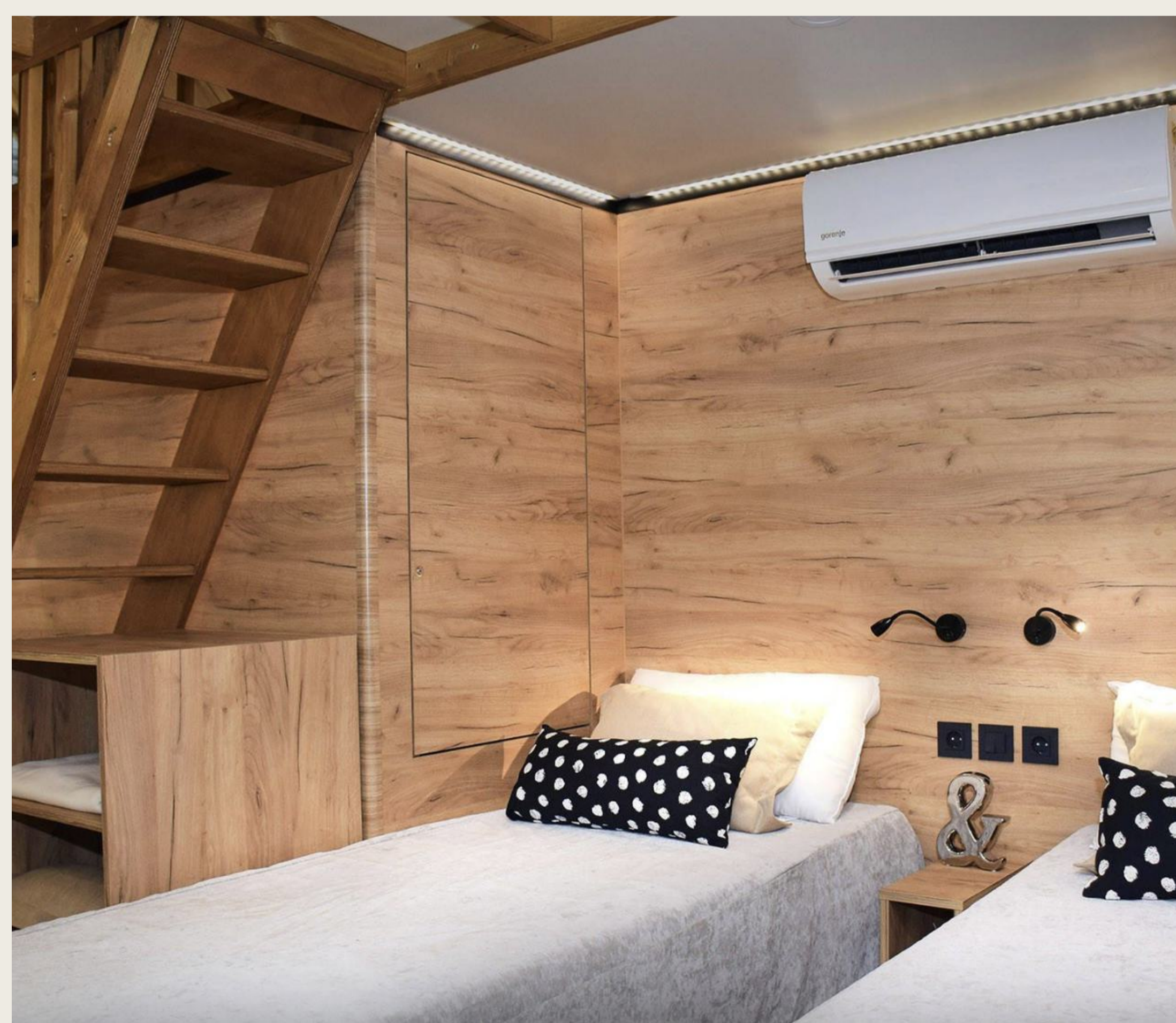


5.0\*9.0\*3.0\*5.1m/45m<sup>2</sup>

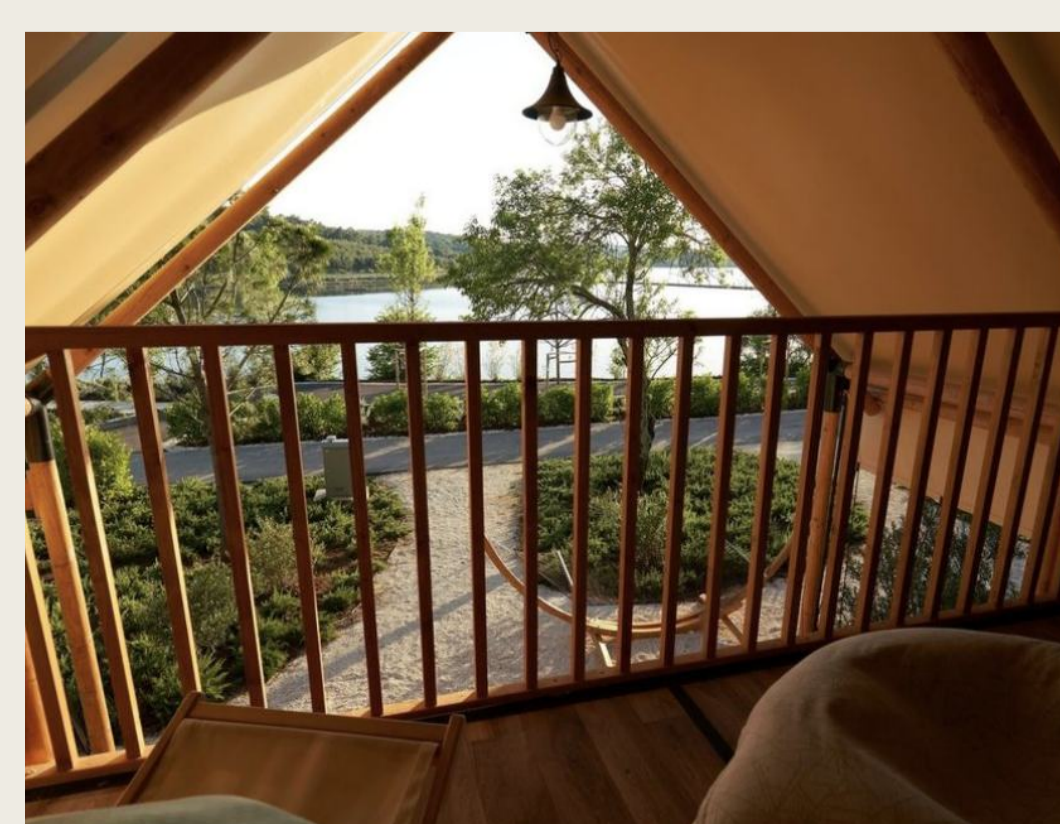


First floor rendering

Second floor rendering



Second Floor Space



Second Floor Balcony



Stairs



Connecting Pipe